

MILLVILLE MUNI (MIV)(KMIV) 3 SW UTC-5(-4DT) N39°22.07' W75°04.33'

WASHINGTON

85 B NOTAM FILE MIV

H-101, 121, L-346, A

RWY 10-28: H6003X150 (ASPH-GRVD) S-120, D-179, 2S-83,

2D-263 PCN 55 F/D/W/T MIRL

RWY 10: MALSR. PAPI(P4L)—GA 3.0° TCH 53'. Trees.

RWY 28: PAPI(P4L)—GA 3.0° TCH 29'.

RWY 14-32: H5058X150 (CONC) S-40, D-65, 2S-83, 2D-125 MIRL

RWY 14: PAPI(P4L)—GA 3.0° TCH 48'. Trees.

RWY 32: PAPI(P4L)—GA 3.0° TCH 39'. Trees.

SERVICE: S8 FUEL 100LL, JET A LGT ACTIVATE MALSR Rwy 10; MIRL Rwy 10-28 and Rwy 14-32—CTAF.

AIRPORT REMARKS: Attended 1300-2100Z. Birds on and in/ov arpt. PAEW within all rwy and twy safety areas daily May-Oct. All ultralight acft, glider ops and formation flts PPR. Call 856-825-1244 Mon-Fri 1300-2100Z. Self-svc fuel avbl 24 hrs with credit card. Main apron clsd to tran acft north of Twy K. Twy G not to be used by acft with wingspan grt than 48' north of Twy A. Fence line 44' north of Twy G cntrln, north of Twy A. Rwy 10 calm wind rwy.

AIRPORT MANAGER: 856-825-1244

WEATHER DATA SOURCES: ASOS 119.6 (856) 327-3455.

COMMUNICATIONS: CTAF/UNICOM 123.0

RCO 122.2 (MILLVILLE RADIO)

Ⓡ ATLANTIC CITY APP/DEP CON 124.6

CLEARANCE DELIVERY PHONE: For CD if una to ctc on FSS freq, ctc Atlantic City approach at 609-485-6193.

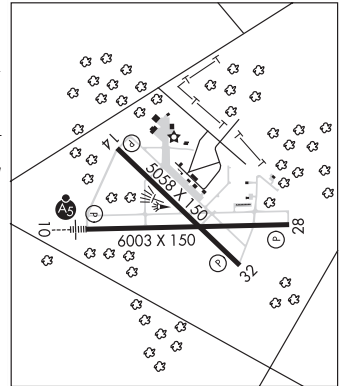
AIRSPACE: CLASS E.

RADIO AIDS TO NAVIGATION: NOTAM FILE MIV.

CEDAR LAKE (L) (L) VORV/DME 115.2 VCN Chan 99 N39°32.26' W74°58.03' 216° 11.3 NM to fld. 120/10W.

RAINBOW NDB (HW) 363 RNB N39°25.09' W75°08.10' 147° 4.2 NM to fld. 92/11W.

ILS 110.9 I-MIV Rwy 10. Class IA. Unmonitored. Autopilot cpd apch NA blw 300 MSL.



MONMOUTH EXEC (See BELMAR/FARMINGDALE on page 163)

MORRISTOWN MUNI (MMU)(KMMU) P (A) 3 E UTC-5(-4DT) N40°47.96' W74°24.89'

NEW YORK

187 B TPA—See Remarks NOTAM FILE MMU

COPTER

RWY 05-23: H5998X150 (ASPH-GRVD) S-30, D-80, 2S-101

H-101, 121, L-33A, 34H

PCN 25 F/C/X/T HIRL

IAP, AD

RWY 05: REIL. Trees.

RWY 23: MALSR.

RWY 13-31: H3997X150 (ASPH-GRVD) S-30 PCN 11 F/C/X/T MIRL

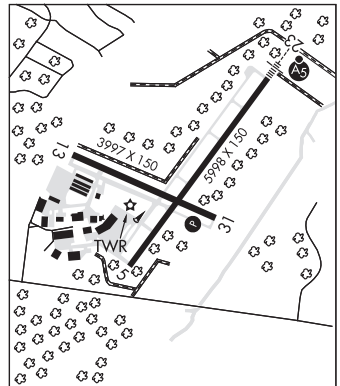
RWY 13: Trees.

RWY 31: REIL. PAPI(P2L)—GA 3.5° TCH 39'. Trees.

SERVICE: FUEL 100LL, JET A, A+ OX 1, 2, 3, 4 LGT Dusk-Dawn; ACTVT HIRL Rwy 05-23, MIRL Rwy 13-31, REIL Rwy 05 and 31, MALSR Rwy 23, and PAPI Rwy 31—CTAF. **MILITARY—FUEL** (NC-100LL, A+)

NOISE: Noise abatement procedures in effect, ctc Noise Abatement Office 973-538-3366 extension 122. All arrival/departure acft follow manufacturers recommended procedures for quiet ops and minimum noise. Voluntary noise abatement proc include avoiding TGL ops on Rwy 13-31.

AIRPORT REMARKS: Attended 1145-0330Z. Birds and deer on and in/ov arpt. When twr clsd all acft and vehicles must state intentions on CTAF before ops on any rwy. ARFF svc avbl 24 hrs daily. For ARFF svcs when twr clsd ctc ARFF station—CTAF or 973-455-1953. Inbound tlc request FBO svcs, instructions, and ramp advisories 30 min prior to arrival. After ldg ctc FBO again 129.6 for preferred ramp entrance to Twy D or Twy J. No TGL on Rwy 13-31 unless the crosswind vclty for Rwy 05-23 exceeds 10 kts. No turbojet ldg on Rwy 13 and Rwy 31 unless the cross wind velocity for Rwy 05-23 exceeds 16 kts. TPA—1200(1013) lgt acft, 1700(1513) heavy acft. Acft carrying explosive cargo PPR before ldg, call 973-538-6400. Helicopter ops over residential areas blo 1000' MSL should be avoided. Route 80 visual apch preferred for Rwy 23. During snow removal ops 15 minute prior notice required on 118.1 and no practice low apchs or touch and go llds. Taxilane K N of FBO ramp, no hel or acft with a wingspan grt than 50 ft. US Customs avbl Mon-Fri 1300-2100Z, between 2101-1259Z and weekends call 973-267-0302 for appointment. Morristown customs association fees apply, ctc airport manager 973-538-6400 for details. Stage I departure fee 0400-1145Z. Ldg fee. User fee arpt. Flight Notification Service (ADCUS) avbl.



CONTINUED ON NEXT PAGE

CONTINUED FROM PRECEDING PAGE

AIRPORT MANAGER: 973-538-6400

WEATHER DATA SOURCES: AWOS-3 (973) 290-0135 LAWRS.

COMMUNICATIONS: CTAF 118.1 ATIS 124.25

Ⓡ **NEW YORK APP CON** 127.6

TOWER 118.1 (1145-0330Z‡) **GND CON** 134.2 **CLNC DEL** 128.6

Ⓡ **NEW YORK DEP CON** 119.2

CLEARANCE DELIVERY PHONE: For CD when ATCT is clsd ctc New York Apch at 800-645-3206.

AIRSPACE: CLASS D svc 1145-0330Z‡; other times CLASS G.

RADIO AIDS TO NAVIGATION: NOTAM FILE TEB.

TETERBORO (T) (T) VORW/DME 108.4 TEB Chan 21 N40°50.92' W74°03.73' 271° 16.3 NM to fld. 3/11W.

DME unusable:

060°-080° byd 22 NM blo 2,500'

081°-120° blo 4,000'

121°-180° blo 3,000'

236°-246°

VOR unusable:

081°-120° blo 4,000'

121°-180° blo 3,000'

236°-246°

ILS 110.3 I-MMU Rwy 23. Class IB. Unmonitored when ATCT closed. Glideslope unusable for cpd apchs blw 875'.

MOUNT HOLLY

SOUTH JERSEY RGNL (VAY)(KVAY) 4 SW UTC-5(-4DT) N39°56.57' W74°50.75'

53 B TPA-853(800) NOTAM FILE VAY

RWY 08-26: H3881X50 (ASPH) S-30 MIRL

RWY 08: REIL. PAPI(P2R)—GA 3.25° TCH 45'. Tree.

RWY 26: REIL. PAPI(P2R)—GA 3.0° TCH 40'. Tree. Rgt tfc.

SERVICE: S4 FUEL 100LL, JET A LGT ACTIVATE MIRL Rwy 08-26 and REIL Rwy 08 and Rwy 26-123.3.

AIRPORT REMARKS: Attended Apr-Oct 1300-0100Z‡, Nov-Mar 1300-2300Z‡. Arpt unatndd Thanksgiving & Christmas Day. Christmas & Thanksgiving eve hrs 1300-1700Z. New Years Day hrs 1600-2300Z. Jet A fuel avbl 24 hr self svc with credit card or truck during attended hrs. Deer on and infov arpt. Helicopter tkfs and lgds restricted to Rwy 08-26 only. Balls marking p-lines on apch to Rwy 08 faded. Trees along sides of rwy primarily northwest. Avoid overflying housing area WNW of arpt blo 300' when in the traffic pattern for Rwy 08. Parallel twy nstd with 18' asphalt. Rwy 08 VGS1 and descent angles not coincident.

AIRPORT MANAGER: 609-267-3131

WEATHER DATA SOURCES: ASOS 119.325 (609) 267-1176.

COMMUNICATIONS: CTAF/UNICOM 122.8

Ⓡ **MC GUIRE APP/DEP CON** 126.475

CLEARANCE DELIVERY PHONE: For CD ctc Mc Guire Apch at 609-754-2767.

RADIO AIDS TO NAVIGATION: NOTAM FILE MIV.

ROBBINSVILLE (H) (H) VORTACW 113.8 RBV Chan 85 N40°12.14' W74°29.70' 236° 22.4 NM to fld. 248/10W.

TACAN AZIMUTH unusable:

105°-115° byd 30 NM

DME unusable:

075°-115° byd 25 NM

130°-160° byd 30 NM blo 4,000'

WASHINGTON

L-346, A

IAP

