

**SAN DIEGO INTL** (SAN)(KSAN) P (CG) 2 W UTC-8(-7DT) N32°44.01' W117°11.38'

LOS ANGELES

17 B AOE Class I, ARFF Index D NOTAM FILE SAN

H-41, L-4H

**RWY 09-27:** H9401X200 (ASPH-CONC-GRVD) S-100, D-150,

IAP, AD

2D-250, 2D/2D2-720 PCN 75 F/A/W/T HIRL CL  
**RWY 09:** MALSR. TDZL. PAPI(P4L)—GA 3.3° TCH 76'. RVR-TR Thld  
dsplcd 1000'. Tree.

**RWY 27:** MALSR. TDZL. PAPI(P4R)—GA 3.5° TCH 66'. RVR-TR Thld  
dsplcd 1810'. Sign. Rgt ttc.

**RUNWAY DECLARED DISTANCE INFORMATION**

**RWY 09:** TORA-8280 TODA-9401 ASDA-8280 LDA-7280

**RWY 27:** TORA-9401 TODA-9401 ASDA-9401 LDA-7591

**ARRESTING GEAR/SYSTEM**

**RWY 27:** EMAS

**SERVICE:** S2 **FUEL** 100LL, JET A **OX** 1, 2 **LGT** Twy C edge lgts OTS  
indef. Rwy 27 PAPI unusable byd 5° left and right of centerline.

**MILITARY—** A-GEAR Rwy 27 EMAS 315' x 218'. **FUEL** (NC-100LL, A)  
FLUID OX.

**NOISE:** Dep curfew in efct. Deps prohibited 0730-1430Z±. Sgfrnt fines.

Med flts exempt with form. Noise ofc 619-400-2660. NOTE: See  
Special Notices—Aircraft Noise Prohibitions/Restrictions.

**AIRPORT REMARKS:** Attended continuously. Intermittent presence of birds

on and invof arpt. Pilots are required to ctc gnd controller prior to  
pushback, tow out and taxi for ttc advisories. Ultralight acft prohibited on arpt. Practice approaches and touch and go  
landings prohibited. ASDE-X in use. Operate transponders with altitude reporting mode and ADS-B (if equipped) enabled  
on all airport surfaces. Taxiing acft are prohibited from passing to the south of acft located on Twy B into alley located  
between Gates 7 and 14. Taxiing acft shall follow lead-in lines until the nose wheel of the acft has entered the  
non-movement area of the alley. Rwy 09-27 FAA gross weight strength DC10-10 410; DC10-30 530; L-1011 430;  
B747 720. 747 and larger acft are prohibited from making intersection tkfs. To reduce jet blast impact at north end of  
Twy F acft will not start engine until 800' from north end of Twy F, abeam the second parking pad. Aircraft crossing Rwy  
09-27 on Twy C6, hold short of Twy C6 facing west on Taxiway C, parallel to runway. In the event of a diversion or irregular  
opr events, acft opr ctc the arpt duty manager 619-400-2710 for PPR due to limitations associated with handling  
diverted flights. Limitations include rstd gate space, customs svcs as well as acft servicing and parking. For access to/r  
Terminal 2 : Gates 23, 25, 27, 29, 31, 33-51 and the island and west RON parking ramps, ctc ramp ctl on 129.775  
sry 131.975 fr 1400-0800Z±, from 0800-1400Z± ctc ground ctl on 123.9. Rwy status lgts in operation. Taxilane A rstd  
to acft with wingspans of 135' or less. Acft with wingspans greater than 171' rstd from using Twy D south of Twy B, and  
when exiting Rwy 09 westbound on Twy B. Outboard engines of four-engine acft are to be kept at idle power for all ground  
maneuvering. Cross-bleed engine starts permitted only on parallel twy with acft aligned on twy centerline. Due to PAEW  
on Rwy 09-27, 30 minute PPR 0830-1230Z± for all landings and departures call 619-400-2710. 30 minute PPR  
619-400-2710 for acft with over 171' wingspan. Military acft on official business only ctc arpt ops at 619-400-2710  
for PPR. Flight Notification Service (ADCUS) available. NOTE: See Special Notices—Aircraft Noise  
Prohibitions/Restrictions.

**AIRPORT MANAGER:** 619-400-2718

**WEATHER DATA SOURCES:** ASOS (619) 296-8934

**COMMUNICATIONS:** D-ATIS 134.8 619-298-0997

MONTGOMERY RCO 122.2 (SAN DIEGO RADIO)

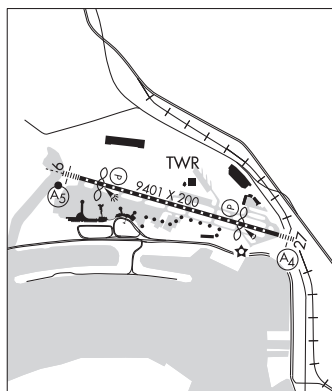
® **SOCAL APP/DEP CON** 124.35 (East), 119.6 (West)

**LINDBERGH TOWER** 118.3 **GND CON** 123.9 **CLNC DEL** 125.9

**CPDLC** (LOGON KUSA)

**PDC**

**AIRSPACE:** CLASS B See VFR Terminal Area Chart.



CONTINUED ON NEXT PAGE

## CONTINUED FROM PRECEDING PAGE

VOR TEST FACILITY (VOT) 109.0

RADIO AIDS TO NAVIGATION: NOTAM FILE SAN.

MISSION BAY (VH) (H) VORTACW 117.8 MZB Chan 125 N32°46.93' W117°13.53' 133° 3.4 NM to fld. 10/15E.

VOR unusable:

026°-088° byd 40 NM  
090°-100° byd 28 NM  
100°-130° byd 17 NM  
130°-190° byd 14 NM  
190°-219° byd 20 NM  
215°-241° byd 40 NM  
242°-252° byd 40 NM blo 8,000'  
242°-252° byd 55 NM blo 18,000'  
253°-288° byd 40 NM  
289°-299° byd 40 NM blo 4,500'  
289°-299° byd 49 NM  
300°-333° byd 40 NM  
308°-350° byd 20 NM blo 8,000'  
347°-351° byd 40 NM  
352°-002° byd 40 NM blo 7,000'  
352°-002° byd 52 NM

TACAN AZIMUTH unusable:

310°-350° byd 15 NM blo 6,000'  
310°-350° byd 30 NM blo 10,000'

DME unusable:

310°-350° byd 20 NM blo 6,000'  
310°-350° byd 30 NM blo 10,000'

ILS/DME 111.55 I-SAN Chan 52(Y) Rwy 09. Class IE. Autopilot coupled approaches NA below 530' MSL.

LOC/DME 110.9 I-UBR Chan 46 Rwy 27. LOC unusable byd 25° right of course.

## SAN DIEGO/EL CAJON

GILLESPIE FLD (SEE)(KSEE) 10 NE UTC-8(-7DT) N32°49.57' W116°58.35'

388 B TPA—See Remarks NOTAM FILE SEE

RWY 09L-27R: H5342X100 (ASPH) S-90, D-120, 2D-200 MIRL

0.5% up E

RWY 09L: PAPI(P4R)—GA 3.75° TCH 45'. Tree.

RWY 27R: REIL. PAPI(P4L)—GA 4.5° TCH 45'. Thld dsplcd 706'.

Road. Rgt tfc.

RWY 17-35: H4145X100 (ASPH) S-58, D-106, 2D-195 MIRL

0.5% up S

RWY 17: VASI(V2L)—GA 4.0° TCH 45'. Thld dsplcd 450'. Bldg.

RWY 35: VASI(V2L)—GA 4.5° TCH 27'. Thld dsplcd 685'. Pole.

RWY 09R-27L: H2738X60 (ASPH) S-12 0.5% up E

SERVICE: S4 FUEL 100LL, JET A OX 1, 2, 3, 4 LGT When ATCT clsd  
ACTVT REIL Rwy 27R; PAPI Rwy 09L and 27R; VASI Rwy 17 and  
35; MIRL Rwy 09L-27R and Rwy 17-35—CTAF. Rwy 27R PAPI  
unusable beyond 6° right of course. FUEL 100LL and Jet fuel self serve  
24 hrs.

NOISE: Noise abatement procedures in effect. Rwy 17 preferred noise  
abatement dep when twr clsd. TGL and Jet dep strongly discouraged  
0600-1500Z±. Noise sensitive areas all quads. Noise abatement  
pattern info avbl at sdcountyairports.com or ctc arpt ops  
619-956-4800. Copter pioneer noise abatement pattern alt 700'  
MSL; dep S from Rwy 35 NRS, crosswind btn Bradley and Vernon Way, downwind at Wing Ave, turn base leg to fly over  
E/W taxi line on E transient ramp, do not overfly Twy D, then via Rwy 17 to Rwy 35 NRS. Remain S of Twy B4 due to  
crossing ground traffic. Do not overfly parked or taxiing acft.

AIRPORT REMARKS: For fuel svc or assistance during business hrs, ctc (619) 449-0611, (619) 448-5991, or (619)  
981-5000. 100LL self svc avbl 24 hrs. Coyotes and birds occasionally on and invof arpt. Simulated engine failures  
prohibited over residential areas. Formation flight avbl as tfc permits, ltd to no more than 3 aft per formation. PPR for VFR  
low apchs blo 1000' AGL from arpt director. PPR for all military acft, and all MIL/CIV VFR low apchs blo 1000' AGL ctc  
arpt ops 619-956-4800. TPA—Rwy 17-35 1188(800) SR-SS, 1388(1000) SS-SR. Rwy 27R TPA 1588(1200) rgt  
tfc SR-SS, TPA 1388(1000) left ttc SS-SR due to 893' AGL mountain 2.1 NM ENE of arpt. Rwy 27L 1388(1000) left  
tfc SR-SS. Rwy 09L-27R and 09R-27L hel skid/run-on ldg prohibited. West transient ramp and portions of Twy D  
between Twy D2 and west transient ramp not visible from twr. Rwy 27R centerline in close alignment with terrain, use of  
Localizer/DME highly recommended. When twr clsd, acft must self-announce on CTAF prior to ldg or departing.

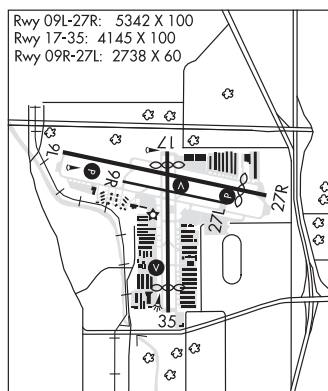
AIRPORT MANAGER: (619) 956-4805

WEATHER DATA SOURCES: AWOS-3P 125.45 (619) 449-1228. LAWRS.

LOS ANGELES

H-4I, L-4H

IAP, AD



CONTINUED ON NEXT PAGE

SW, 21 MAR 2024 to 16 MAY 2024